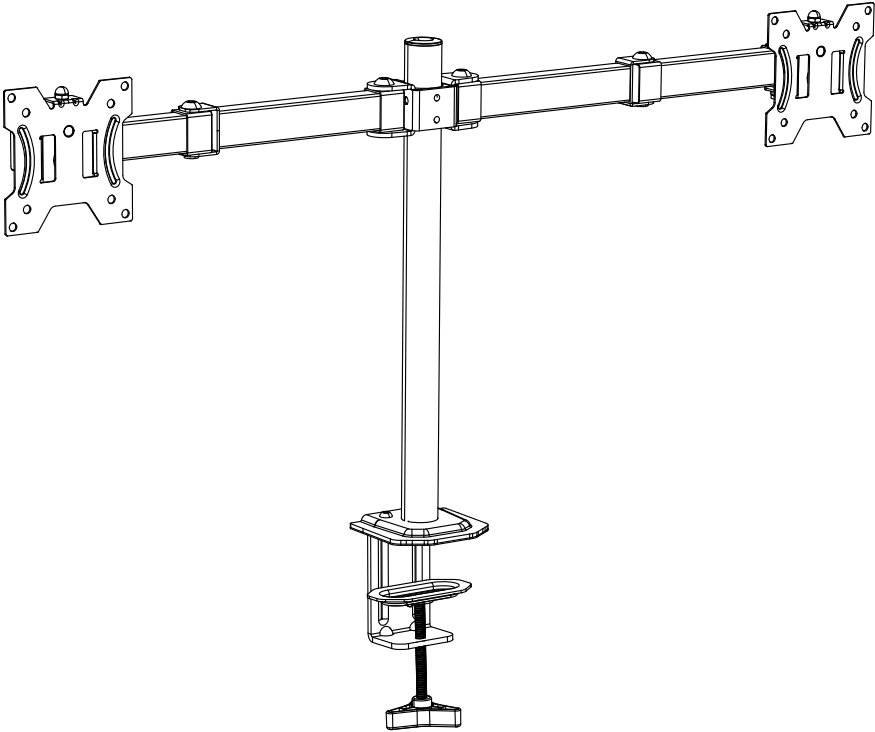


INSTRUCTION MANUAL

HUANUO

Rev00(A)

HNCM7



Desk Monitor Arm



(US/CA) 1-800-556-0533
(UK) 44-808-196-3874



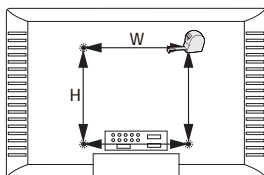
support@huanuo.com



www.huanuo.com

Before getting started, let's make sure this mount is compatible.

1 Is the VESA pattern of your monitor 75 x 75mm (3" x 3") to 100 x 100mm (3.9" x 3.9")?



- Yes - Perfect!
 No - This mount is NOT compatible.

2 Does your monitor (including accessories) weigh less than 17.6 lbs (8kg) ?



- Yes - Perfect!
 No - This mount is NOT compatible.

3 Tools Needed (NOT Included)



Phillips
Screwdriver



Electric Drill



7/16 - 7/8"
(11 - 22mm)
Wood Drill Bit



3/8" (10mm)
Wrench

4 Important Safety Information

NOTE

- Please carefully read all instructions before attempting installation. If you DO NOT understand the instructions or have any questions or concerns, please contact our technical support line at 1-800-556-0533 (US/CA) / 44-808-196-3874 (UK) or customer service at support@huanuo.com.
- Not all hardware included in this package will be used.

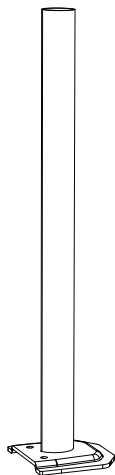
CAUTION

- Avoid potential personal injuries and property damage!
- DO NOT use this product on desks made of particle board or other soft woods.
- DO NOT use this product for any purpose that is NOT explicitly specified in this manual. DO NOT exceed weight capacity. We are NOT liable for damage or injury caused by improper mounting, incorrect assembly or inappropriate use.
- Before starting assembly, verify all parts are included and undamaged. DO NOT use damaged or defective parts. If you require replacement parts, please contact our technical support line at 1-800-556-0533 (US/CA) / 44-808-196-3874 (UK) or customer service at support@huanuo.com.

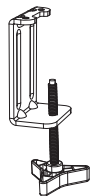
WARNING

- This product contains small parts that may pose a choking hazard.

Contents



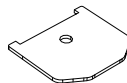
Pole
01 x 1



C-Clamp
02 x 1



Locking Plate
[a] x 1



Bottom Pad
[b] x 1



M8 X 8mm
Bolt
[E1] x 2



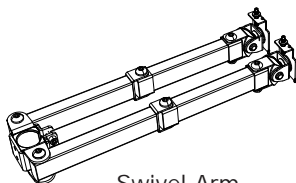
M8
Nut
[E2] x 1



3/16" (5mm)
Large Allen Key
[F1] x 1



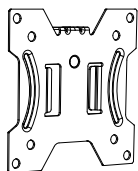
1/8" (3mm)
Small Allen Key
[F2] x 1



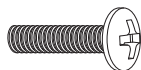
Swivel Arm
03 x 1



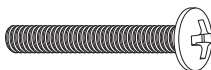
Decorative Cover
[D2] x 1



VESA Plate
04 x 2



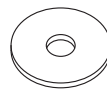
M4 x 12mm
Bolt
[A] x 8



M4 x 30mm
Bolt
[B] x 8



L13mm
Spacer
[C] x 8



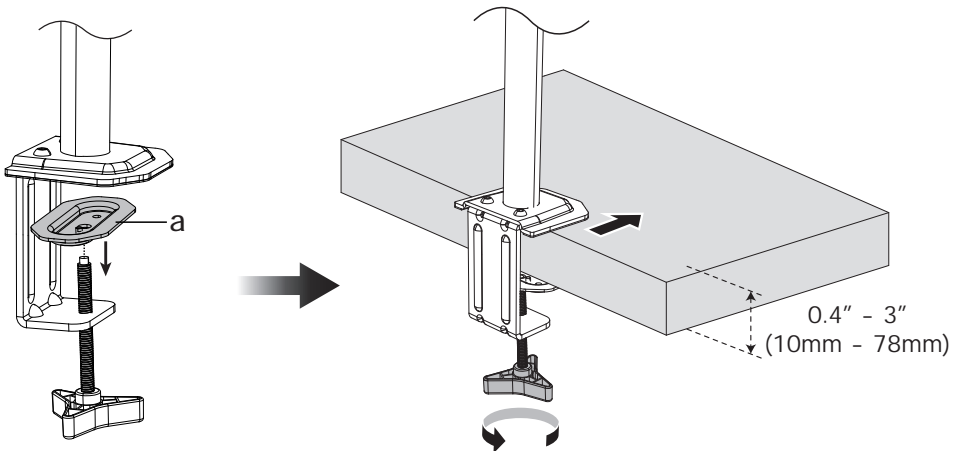
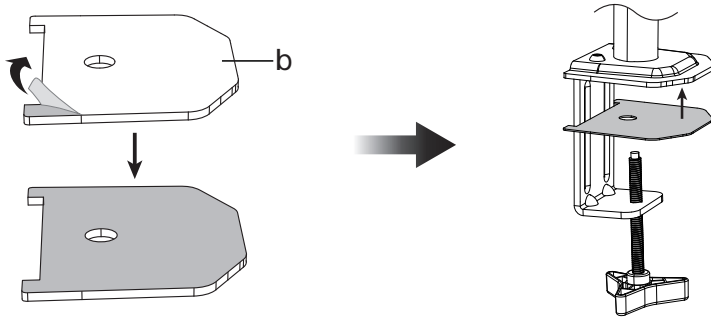
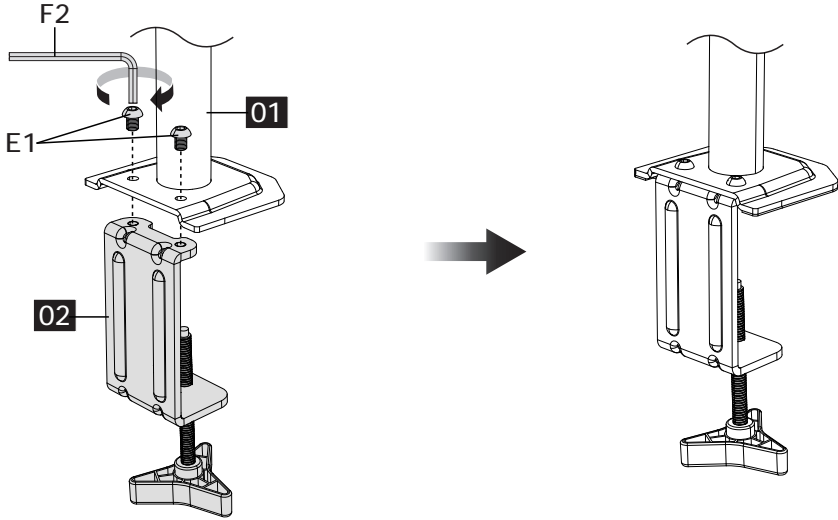
M4
Washer
[D1] x 8



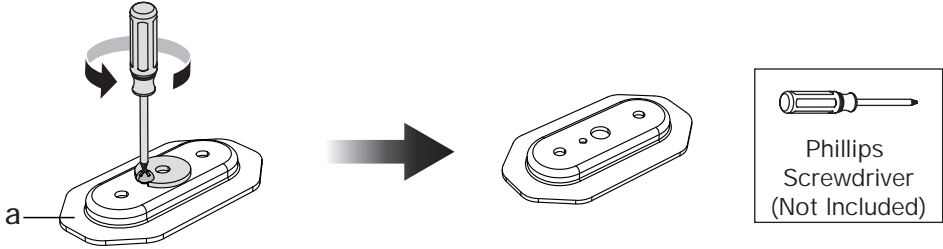
M6
Nut
[E3] x 2

Step 1 Install the Base

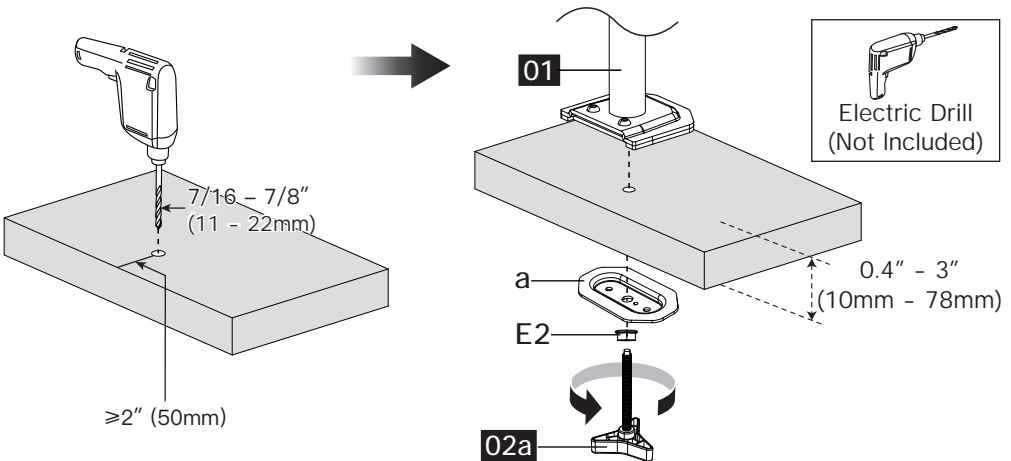
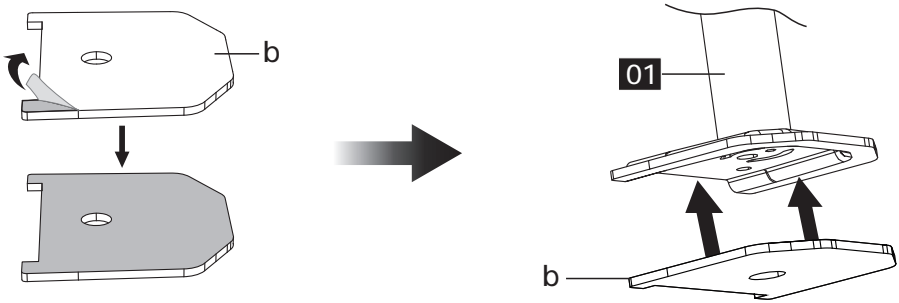
Option A: For C Clamp Mounting



Option B: For Grommet Mounting

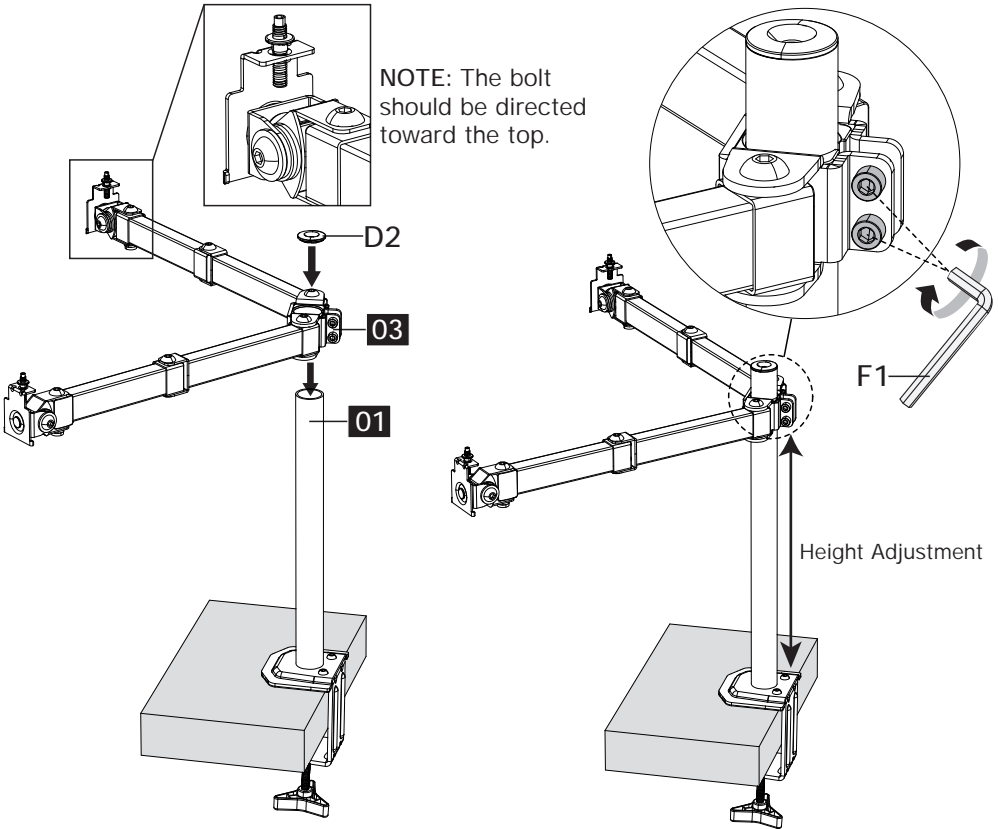


Remove the pre-assembled washer and bolt on the locking plate [a].



NOTE: If there is no grommet hole on your desktop, mark a hole on your desired position (Be sure to leave 2" from the edge of the desktop). Drill a hole using a drill bit in the diameter of $7/16-7/8"$ (11-22mm).

Step 2 Secure the Swivel Arm [03] and Decorative Cover [D2] to the Pole [01]

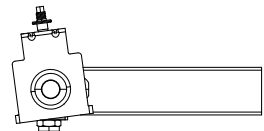


Slide the swivel extension arm [03] downwards to your desired height, and tighten the nuts [F1] to hold the arm in place.

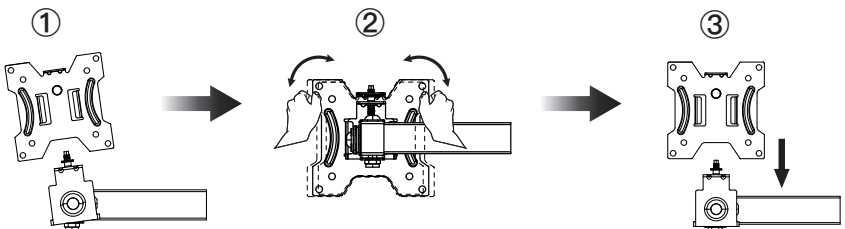


WARNING

CASE: If the head is not straight.

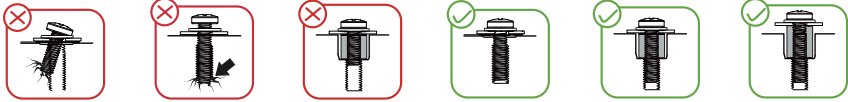
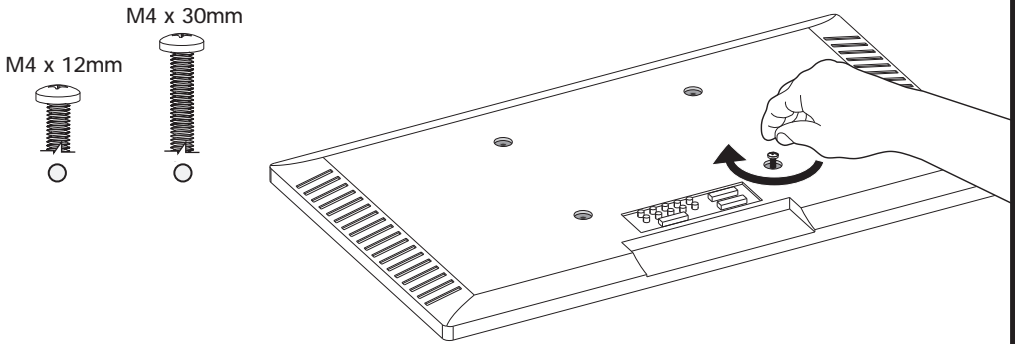


Solution



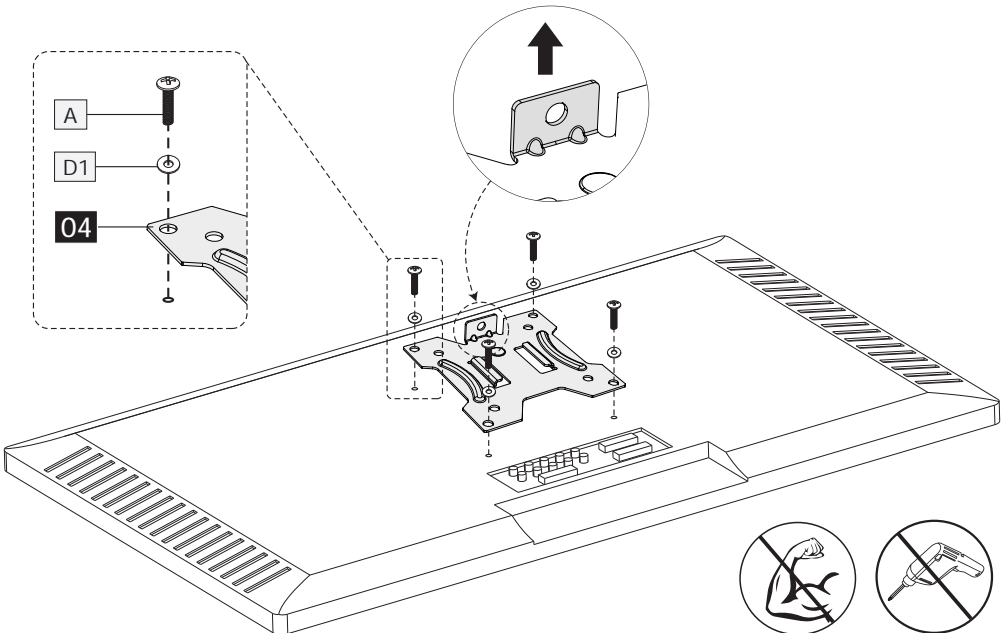
Step 3 Attach the VESA Plates to the Monitors

Select Monitor Bolts

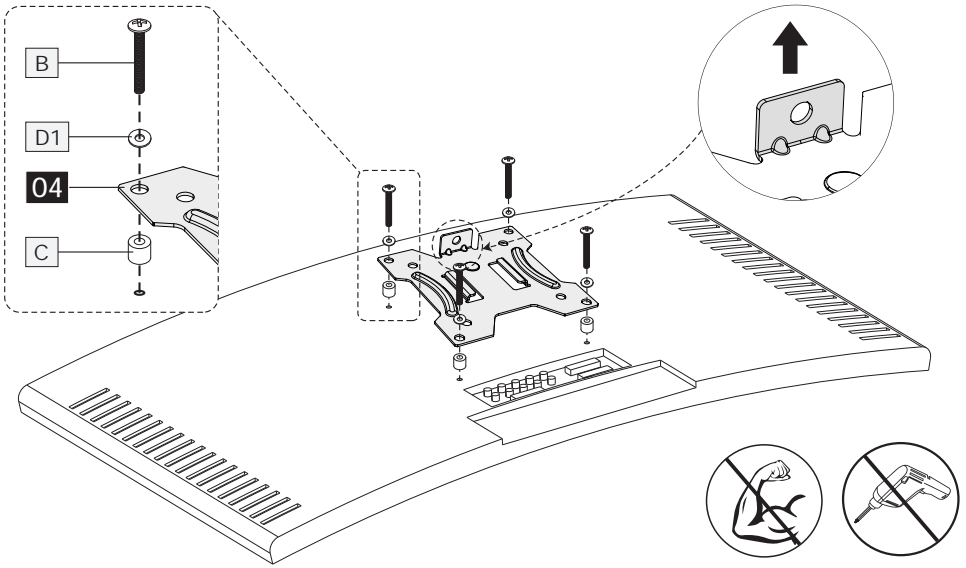


Hand thread bolts into the threaded inserts on the back of your TV to determine which bolt (M4 x 12mm or M4 x 30mm) to use. A minimum of 4-5 turns into the threading is required. Do not turn past the bottom of the hole.

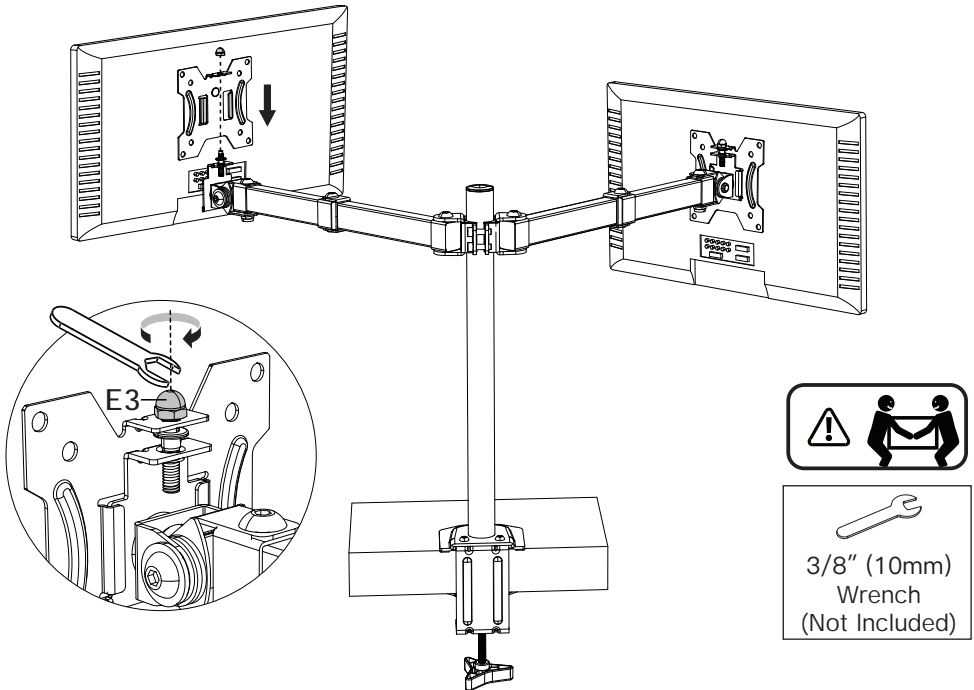
Option A (For Flat Back TVs)



Option B (For Curved TVs)




Step 4 Hang the Monitors on the Swivel Arm

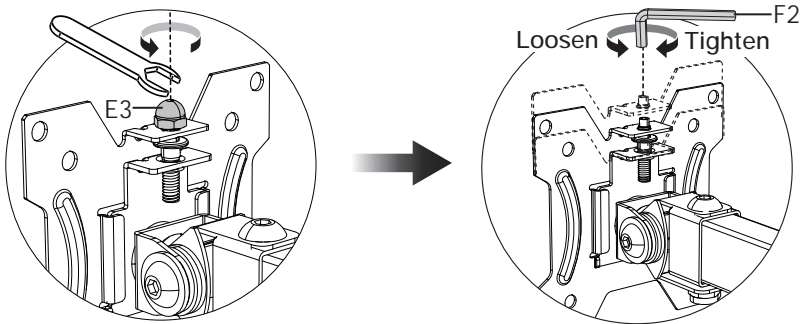
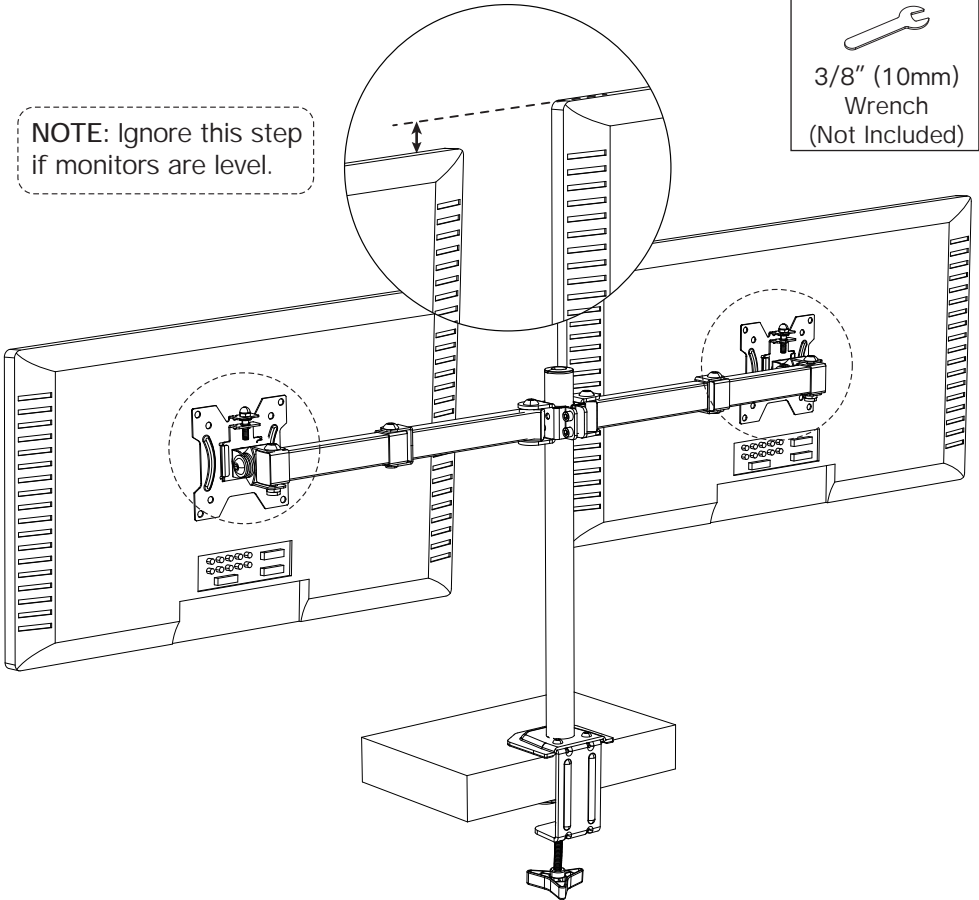


Hang the monitor on the head of the swivel arm using the hanging tab and nut [E3]. Tighten the nut [E3]. Make sure the nut is secured before you rotate the monitor.

Step 5 Alignment of Two Monitors

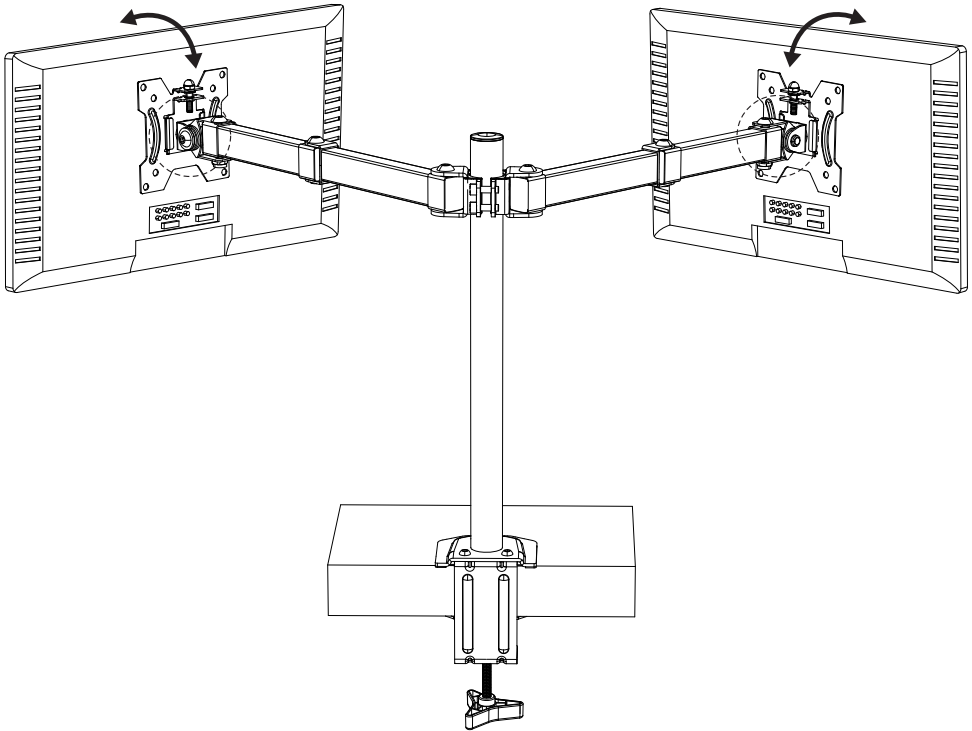
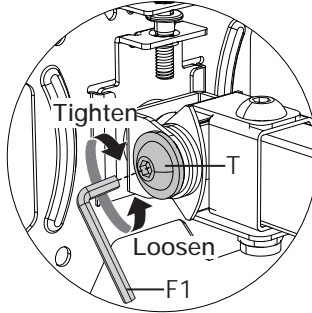
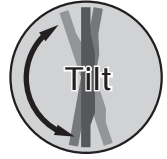
NOTE: Ignore this step if monitors are level.


3/8" (10mm)
Wrench
(Not Included)



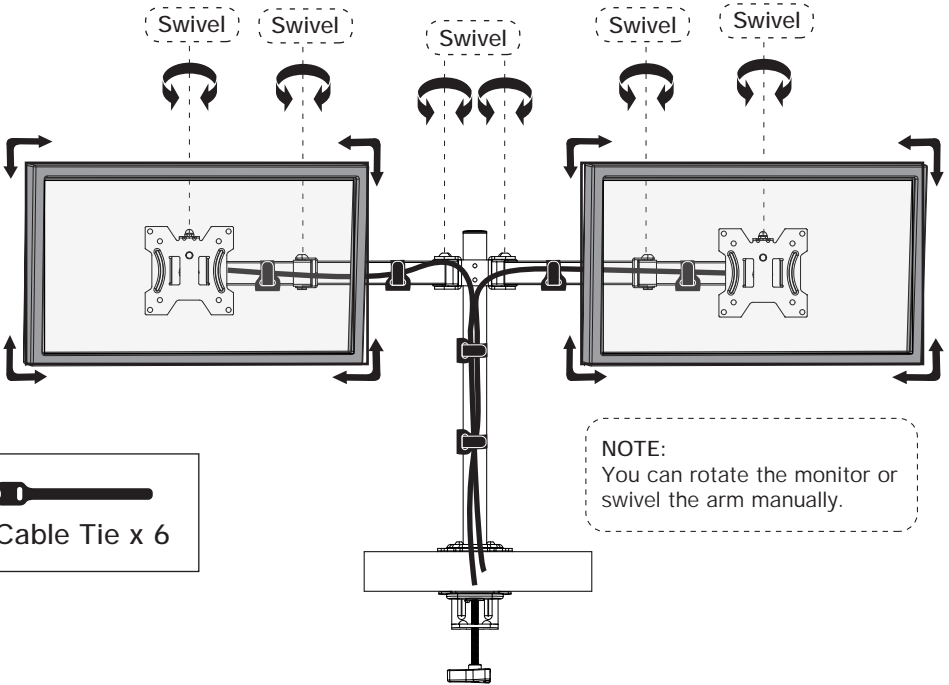
Remove the nut [E3] with wrench, then turn the bolt with small Allen key [F2] to raise or lower the monitor. Then retighten the nut [E3] after adjustment. Individual monitor height adjustment helps to perfectly align the monitors.

Step 6 Tilt Adjustment



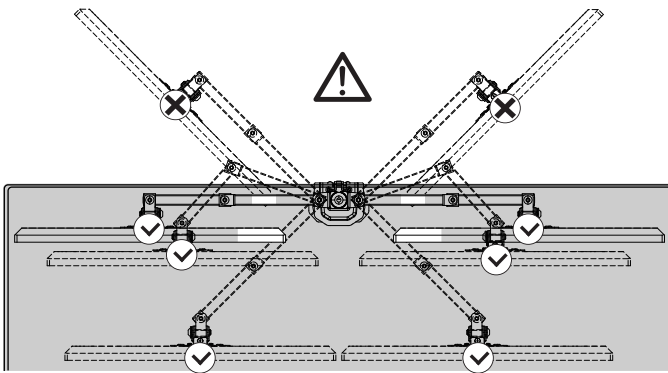
The monitor should adjust easily when moved, then stay in place. Adjust the tilt tension bolt [T] if your monitor naturally tilts up or down.

Step 7 Cable Management



WARNING: Ensure the monitor bolts and bolts securing the monitors to the mount are fully tightened before rotation.

Step 8 Rotation Restriction



WARNING:

To avoid tipping, please be careful not to extend the arms too far forward or backward. When you adjust the angle of the arms, please make sure two arms are balanced to avoid instability of the center of gravity of the base.

HUANUO



(US/CA) 1-800-556-0533
(UK) 44-808-196-3874



support@huanuo.com



www.huanuo.com